

- WEB SITE USERS: Learn skills / acquire knowledge**
- Learn through education & formal training
 - Academic/Research institutes that provide academic programs in climate & health [X]
 - Training (online and not) [X]
 - Training materials [X]
 - Events [X]
 - Learn on the job
 - Learn by reading
 - Scientific literature search [X]
 - Training materials [X]
 - Grey literature search [X]
 - Events [X]
 - Learn by looking at other initiatives
 - Case studies [X]
 - Countries with similar risk profile [N+]
 - Communities of practice by working area [X+]
 - Projects & initiatives inventories [X+]
 - Learn by networking with experts
 - Events [N]
 - Communities of practice by working area [X+]
 - Organization profiles by working areas [X+]
 - Key documents [X]
 - Forums in climate & health (quora-style) [X]

- [X] existing content
- [X+] adaptation of existing content
- [N+] new - needed
- [N] new

Raise awareness

- Raise awareness within the climate/health community
 - Narrative to explain linkages between climate and health [X+]
 - Key visualizations / infographs [X+]
 - Key concepts explained (see PW) [X+]
 - Terminology [X+]
 - Key documents [X]
 - Climate Hazards (current + future) [X+]
 - Health risks (current + future) [N]
 - Linkages with SDGs (and other global mechanisms) [N+]
 - Champions/Advocates [N]
 - Blogs [N]
- Educate the public [N]
 - Awareness materials [N]
 - Advocacy tools/events [N]
 - Media contacts [N]

Develop vulnerability & risk assessments

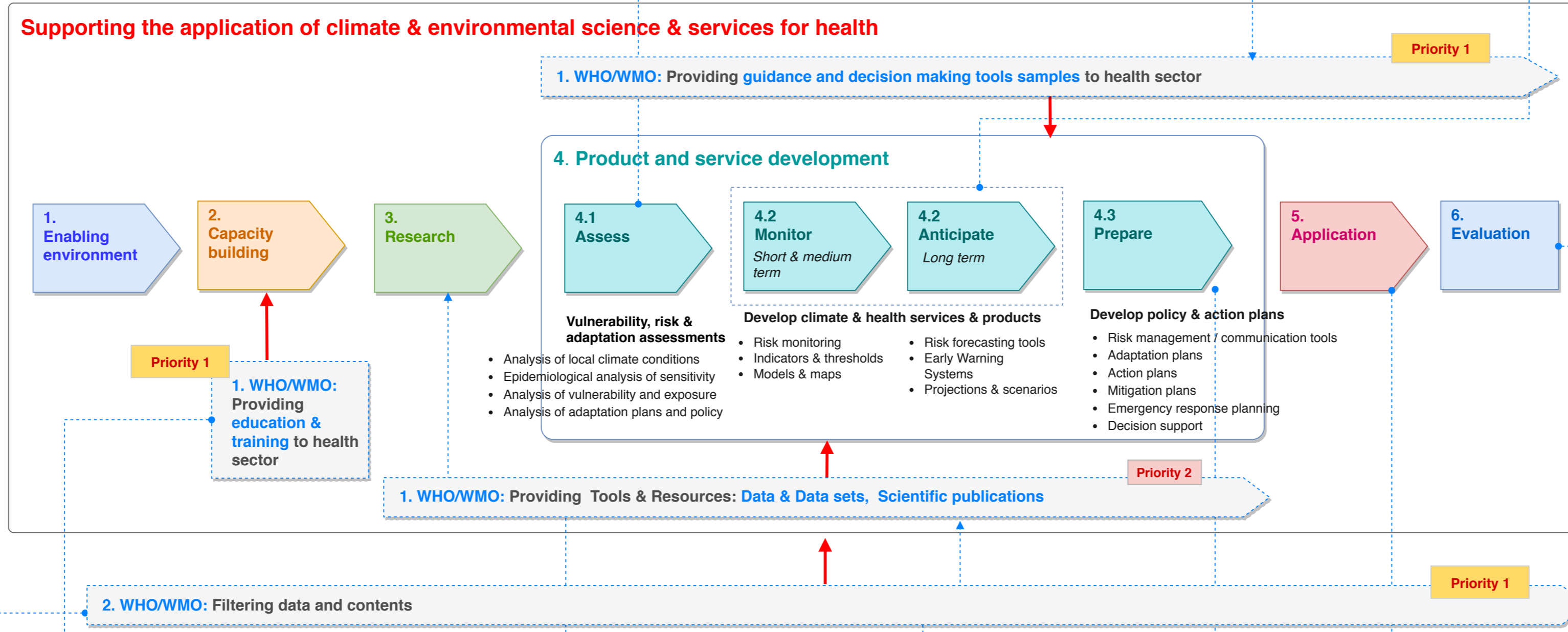
- Prepare to conduct assessments
 - Socio-economic datasets [X]
 - Vulnerability & adaptation assessments [X]
 - National health impact assessments [X]
- Develop assessment tools and processes
 - Guidance on sensitivity analysis [N]
 - Guidance on vulnerability indicators [N]
 - Risk assessment: sectors to look at [N]
 - Climate & health datasets (GIS) [X+]
 - National adaptation plans [X]
 - Vulnerability mapping [X]
- Conduct assessments
 - Guidance on how to write a vulnerability assessment [N]
 - Country profiles [X+]
 - Hazard profiles [X+]
 - Health risk profile [N+]
 - Climate & health datasets (GIS) [X+]
 - Health impact monitoring by hazard [X+]
 - Global health impact monitoring tools [X+]
 - National adaptation plans [X]
 - Vulnerability mapping [X]
 - Infrastructure data of health facilities [N]
 - Grey literature by country [X]
 - Organization profiles by working areas [X+]

Provide guidance to health sector

- Research to develop/provide guidance
 - WMO Climate Services Toolkit [X+]
 - Resources from WHO Toolkit [X]
 - Additional resources to use as samples for guidance [N]
 - Country profiles [X+]
 - Guidance products how to [N]
 - Guidance products how to - hazard specific [N]
 - Case studies [X]
- Develop guidance
 - Guidance on how to use climate services [N]
 - Operating procedures samples [N]
 - Existing country-specific guidance [X]
 - Hazard / Disease specific standard operating procedures (SOPs) [N]
- Provide guidance
 - Provide guidance how to [N]
 - How to reach local health services [N]
 - Case studies [X]

Develop climate & health information products & services

- Conduct user-centered research
 - Guidance on how to build climate & health task teams [N]
 - Guidance on how to collect user needs [N]
 - Health standard operating procedures (SOPs) [X+]
 - WMO Climate Services Toolkit [X+]
 - WHO Toolkit for project managers [X+]
 - Organize events to convene climate & health professionals [N]
- Conduct technical research
 - Guidance on how to develop climate info products [X+]
 - Disease prediction models [N]
 - Atlas of climate services [N]
 - List of climate services by country [X]
 - Scientific literature search [X]
 - Links to expert services [X]
 - Communities of practice by working area [X+]
 - Organization profiles by working area [X+]
- Develop/Refine climate info products & services
 - Guidance on how to develop climate info products [X+]
 - Guidelines on risk management & communication tools [X+]
 - WMO Climate Services Toolkit [X+]
 - What data can be found where [N+]
 - Climate health data GIS [N]
 - Global datasets (e.g. EMDAT) [X]
 - Risk management & communication tools [X]
- Develop/Refine forecasting products
 - Guidance on creating forecast models [N]
 - Forecast data [X]
 - Forecasting tools [X]
 - Seasonal forecasts [X]
 - Case studies [X]
 - Country profiles: countries with similar risk profile [N+]
 - Organization profiles (providers) [X+]
- Develop projections
 - Guidance on creating projections [N]
 - Projection data? [X]
 - Projection tools [X]
 - Case studies [X]
 - Organization profiles (providers) [X+]
- Develop alert systems
 - Guidance on setting up alert systems [N]
 - Guidance on thresholds [N]
 - Relevant climate indices explained (list+guidance) [N+]
 - Health impact data [X+]
 - Early Warning Systems by country/hazard [X]
 - Case studies [X]
 - WMO Climate Services Toolkit [X+]
 - Emerging technologies [N]
 - Funding opportunities [N]
 - Countries with similar risk profile [N+]
- Develop decision making tools / response systems
 - Guidance on developing decision calendars [N]
 - Guidance on risk management & communication tools: to reach local health services + civil society [N]
 - Messages/advisories templates [N]
 - Messages/advisories samples [X]
 - Case studies [X]
 - WMO Climate Services Toolkit [X+]
- Disseminate climate info products & services
 - Guidance on products & services dissemination [N]
 - Guidance on how to read climate info products (e.g. no errors does not exists) [N+]
 - Awareness/advocacy materials [X]
 - Data, statistics, visualizations [X+]
 - Countries with similar risk profile [N+]
 - Contribute content button [N]
 - News [X+]
 - Newsletters [X+]
 - Communities of practice [X]



Filter data

- Filter data by source
 - Content items by source (in lists and on detail pages) [X]
 - WHO/WMO + experts panels for quality assurance/content curation [X+]
- Validate information
 - Scientific literature [X]
 - Peer-reviewed stamp on grey literature [X+]
 - Organization profiles (validated sources) [X+]
- Select relevant data
 - Guidance how to develop climate products & services [X+]
 - Relevant climate indices explained (list+guidance) [N+]
 - WMO Climate Services Toolkit [X+]
 - Met/Health Data Wizard [N]

Provide education & training

- Teach academic courses in climate & health
 - Academic/Research institutes that provide academic programs in climate & health [X]
- Provide training to climate & health professionals
 - Climate Services for Health - Fundamentals [X+]
 - Guidance on how to provide training [N]
 - Training (online and not) [X]
 - Guidance documents [X]
 - Training materials [X]
 - Guidance on how to use climate services [N]
 - Terminology [X+]
 - Organization profiles (training providers) [X+]
- Develop training materials for health professionals
 - Guidance on how to develop training materials [N]
 - Training materials [X]
 - Guidance on how to use climate services [N+]
- Monitor provided training
 - Online training events analytics [N]
 - Non-online training stats [N]
 - Training materials analytics [N]

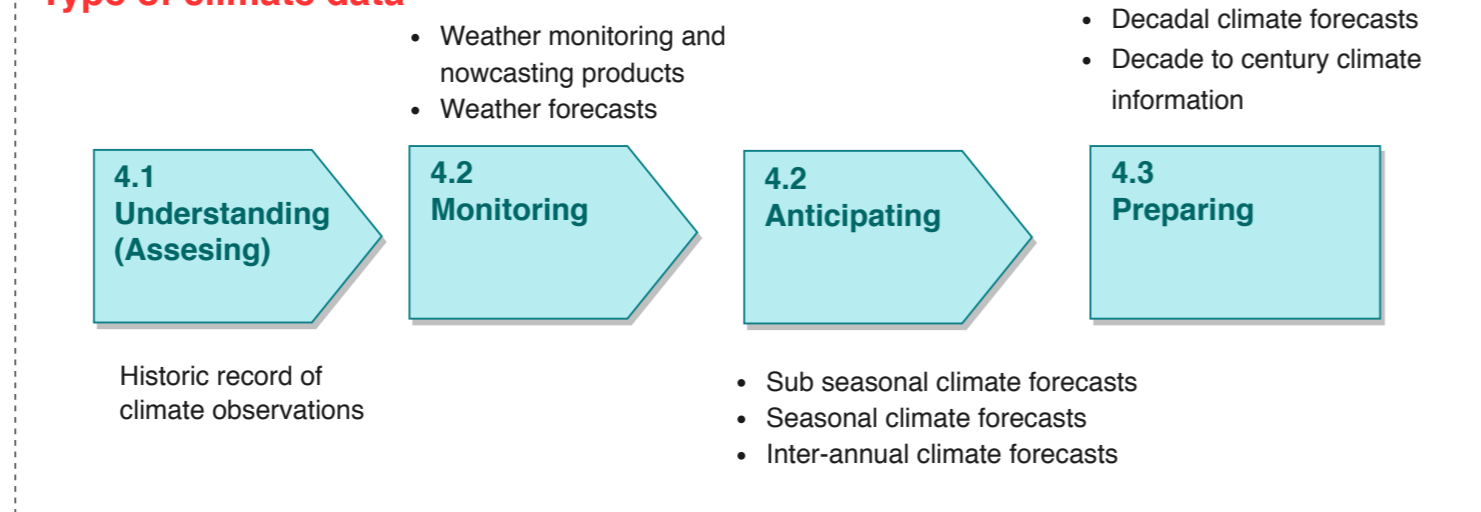
Conduct research on climate impacts on health

- Conduct research
 - Climate Services for Health - Fundamentals [X+]
 - Scientific literature (key climate & health research) [X]
 - Academic/Research institutes [X]
 - Journals (title+summary visible) [X+]
 - Develop tools for hazard specific health impacts [N]
- Disseminate findings [N]
 - Scientific literature library [X]
 - Journals (title+summary visible) [X+]
 - News [X+]
 - Events [X]
 - Research briefs (see PreventionWeb) [N]
 - Contribute content button [N]
 - Communities of practice [X+]

Seek climate & health data

- Seek met data
 - Climate data libraries (incl. WMO regional centers) - faceted search [X+]
 - WMO Climate Services Toolkit [X+]
 - Guidance on how to read climate data [N+]
 - Relevant climate indices explained (list+guidance) [N+]
 - Organizations profiles (climate data providers) [X+]
- Seek comparable met data
 - WMO Climate Services Toolkit [X+]
 - Relevant climate indices explained (list+guidance) [N+]
- Seek met data visualizations
 - Met data visualizations [X+]
 - Country profiles visualizations [X+]
 - Visualizations by hazard [X+]
- Seek climate trends & summaries
 - Country profile: main climate risks [X+]
 - Health indicators (current + future) [X+]
 - National seasonal forecasts [X]
 - Regional forecasts [X]
 - Climate model projections [X]
 - Emissions & commitments (data) [X]
 - Met observations [X]
 - Climate summaries [X]
 - Climate summaries by country [X+]
 - Climate trends [X]
- Seek projections
 - Data processing and forecasting systems (DPFS) to help with modelling [X+]
- Seek health data
 - Routine health data [X+]
 - Health indicators (current + future) [X+]
 - Health dat sets [X]
 - Co-benefits to health from CC mitigation (data) [X]
 - Health risk profile [N+]
 - Country profiles [X+]
 - Organization profiles (health data providers) [X+]
- Seek data on climate impacts on health

Type of climate data



Application of products & services

- Apply climate information products & services
 - Guidance how to apply and maintain climate information products & services [N]
 - Case studies [X]

Develop policy & plans [N]

- Assess existing policy & plans
 - Guidance on adaptation plans assessment [N]
 - National response evaluation (data) [N]
 - National adaptation plans [X]
 - Policies by country and by hazard [X]
 - Organization profiles [N]
- Assess existing implementation
 - Early warning systems by country/region/hazard [X]
 - Projects & initiatives by country/region [X]
 - Country profiles [X+]
 - Events [X+]
 - Organization profiles [X+]
 - Communities of practice [X+]
- Develop policy & plans
 - Guidance on how to write an adaptation plan [N]
 - How climate change information informs health policies and programs [N]
 - Climate health impact data (national level) [N]
 - National adaptation plans [X]
 - Regional adaptation plans [X]
 - Adaptation plans templates? [N]
 - Compare countries with similar risk profiles [N+]
- Implement policy & plans
 - Implementation guidelines [N]
 - Case studies [X]
 - Organization profiles (providers) [N]
- Evaluate policy & plans
 - Guidance on evaluation process [N]
 - Evaluation tools [N]
 - Monitoring data & stats [N]
 - Health impact monitoring [N]
 - Case studies [X]
- Share lessons learnt
 - Guidance on how to share lessons learnt [N]
 - Template for sharing lessons learnt [N]
 - Case studies [X]
 - Contribute content button [N]
 - Online platforms for communities of practice (e.g. PreventionWeb) [X]
 - Countries with similar risk profile [N+]

Evaluation of products & services

- Evaluate climate info products & services
 - Guidance on product/services evaluation [N]
 - Analytics for hit/download of hosted content [X+]
 - WMO Climate Services Toolkit analytics [X]